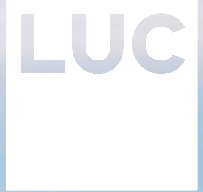


Thurrock Green & Blue Infrastructure Strategy

4th November 2019



Presentation content



1. Work done to inform Green & Blue Infrastructure (GBI) Strategy
2. Overview of GBI proposals
3. Next steps

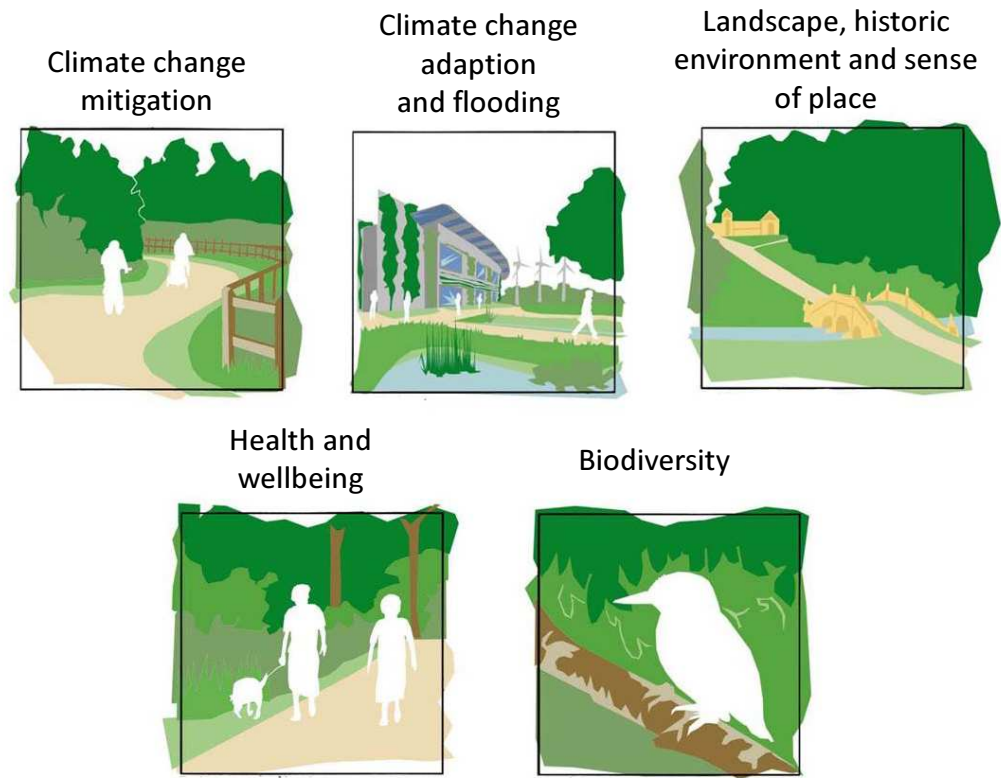


Moat at Coalhouse Fort

What is Green & Blue Infrastructure?



Green and Blue infrastructure: A network of multi-functional green space and water space, urban and rural, which is capable of delivering a wide range of environmental and quality of life benefits for local communities.



Strategy development

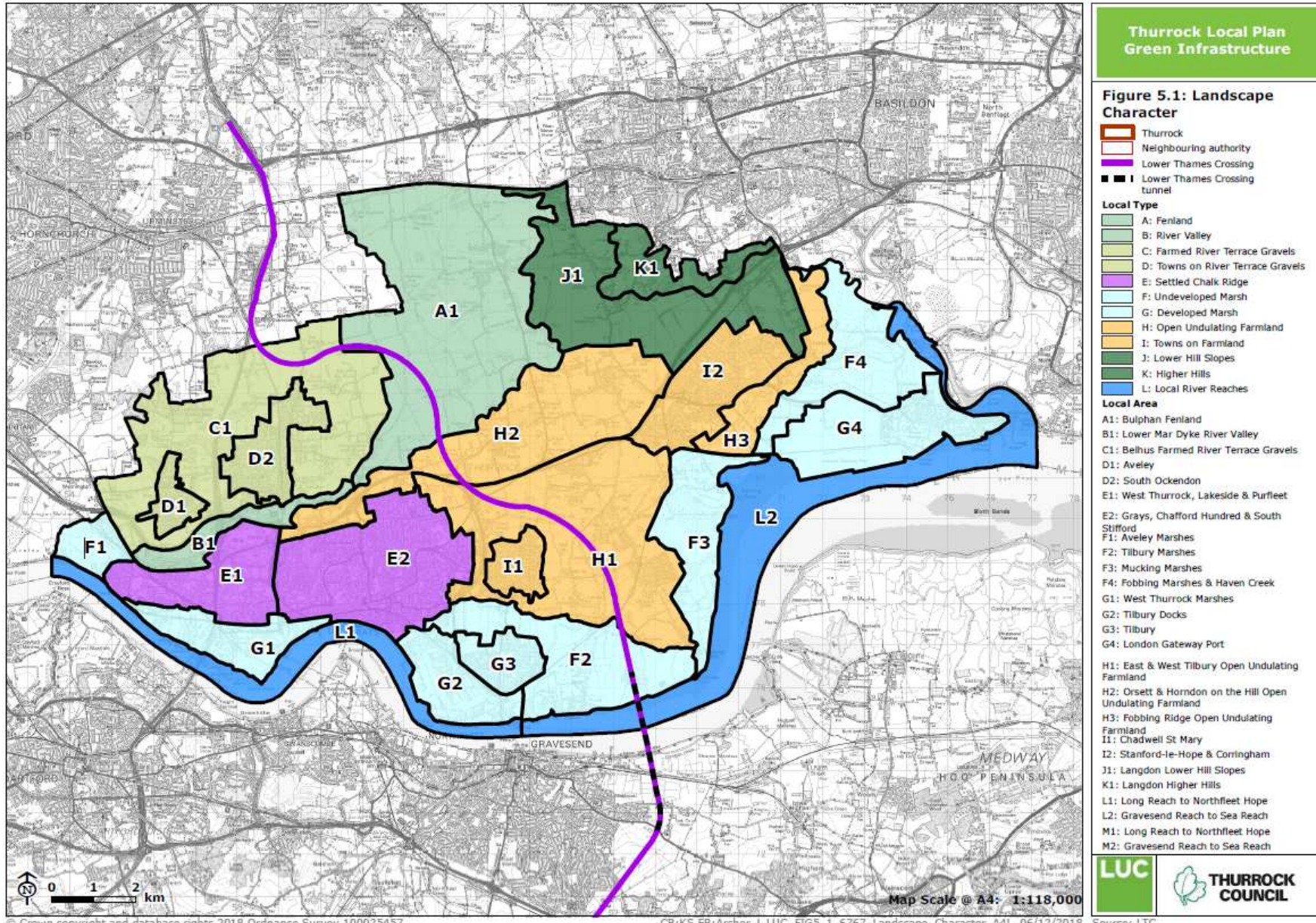


- Understand issues and drivers
- Analyse existing assets
- Identify gaps and opportunities
- Consultation with stakeholders
- Develop GBI projects

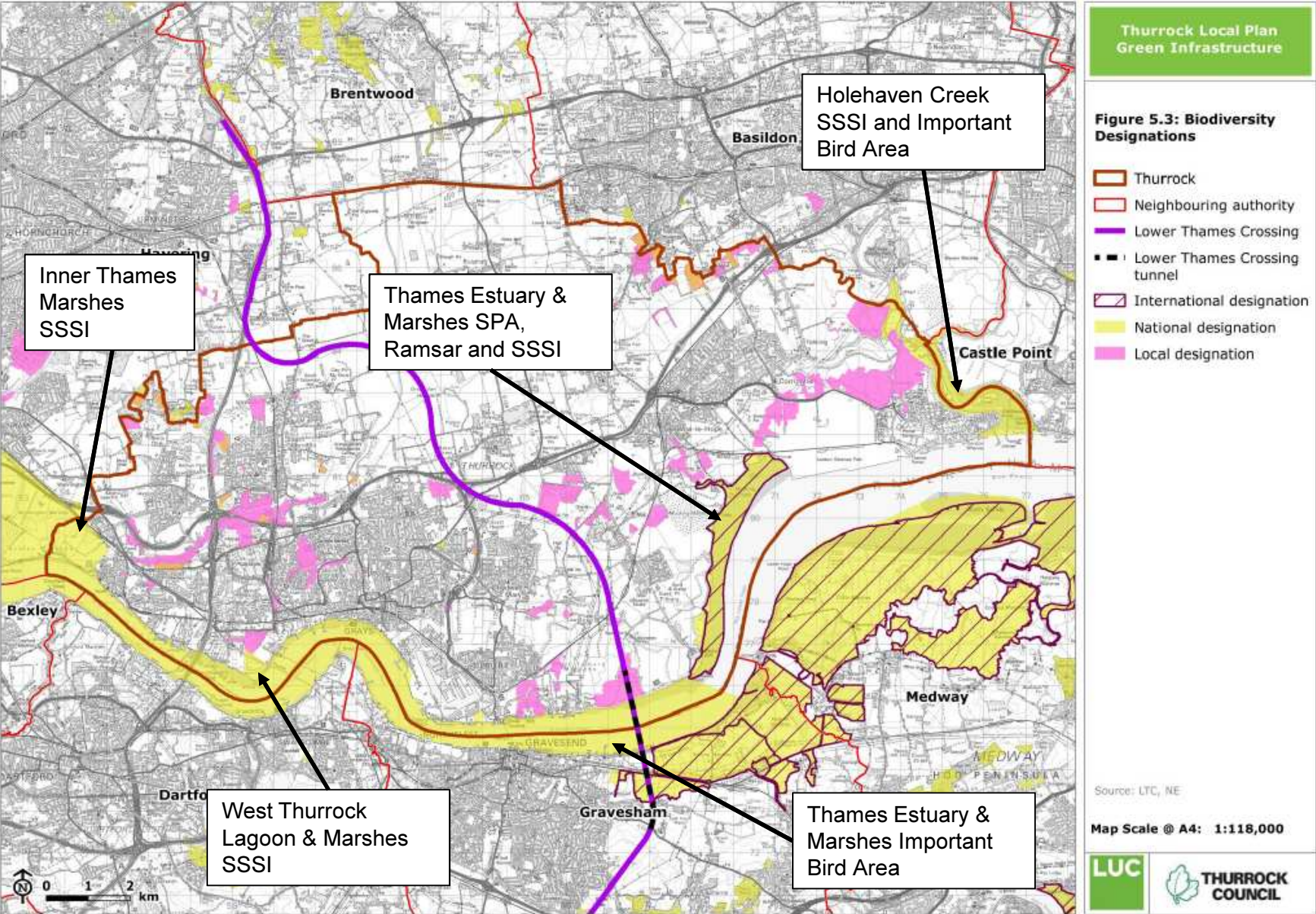


Davy Down Riverside Park

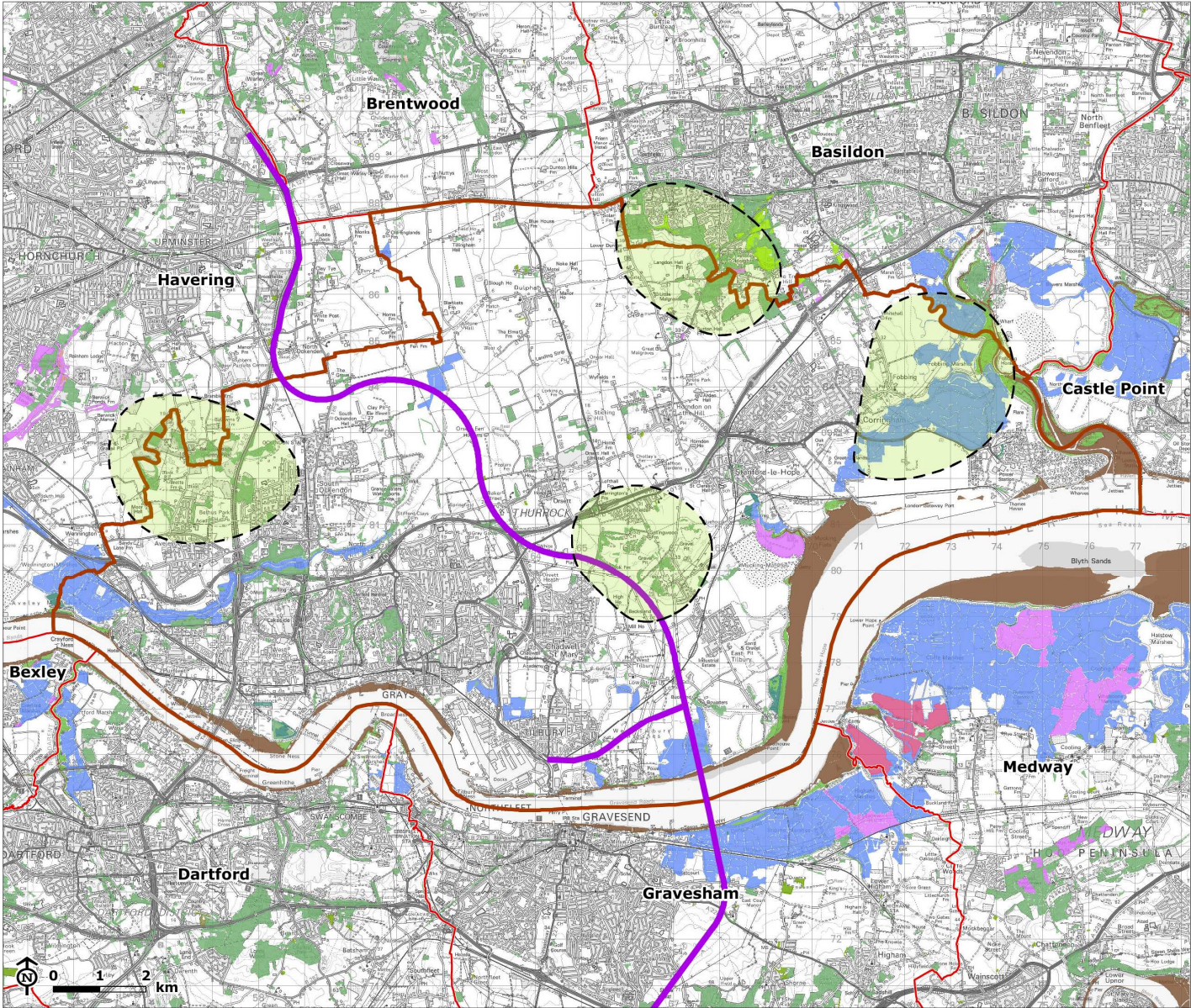
Existing assets: landscape character



Existing assets: biodiversity



Existing assets: biodiversity



Thurrock Local Plan Green Infrastructure

HWBa: Priority Habitat

- Thurrock
- Neighbouring authority
- Lower Thames Crossing

Priority habitat inventory

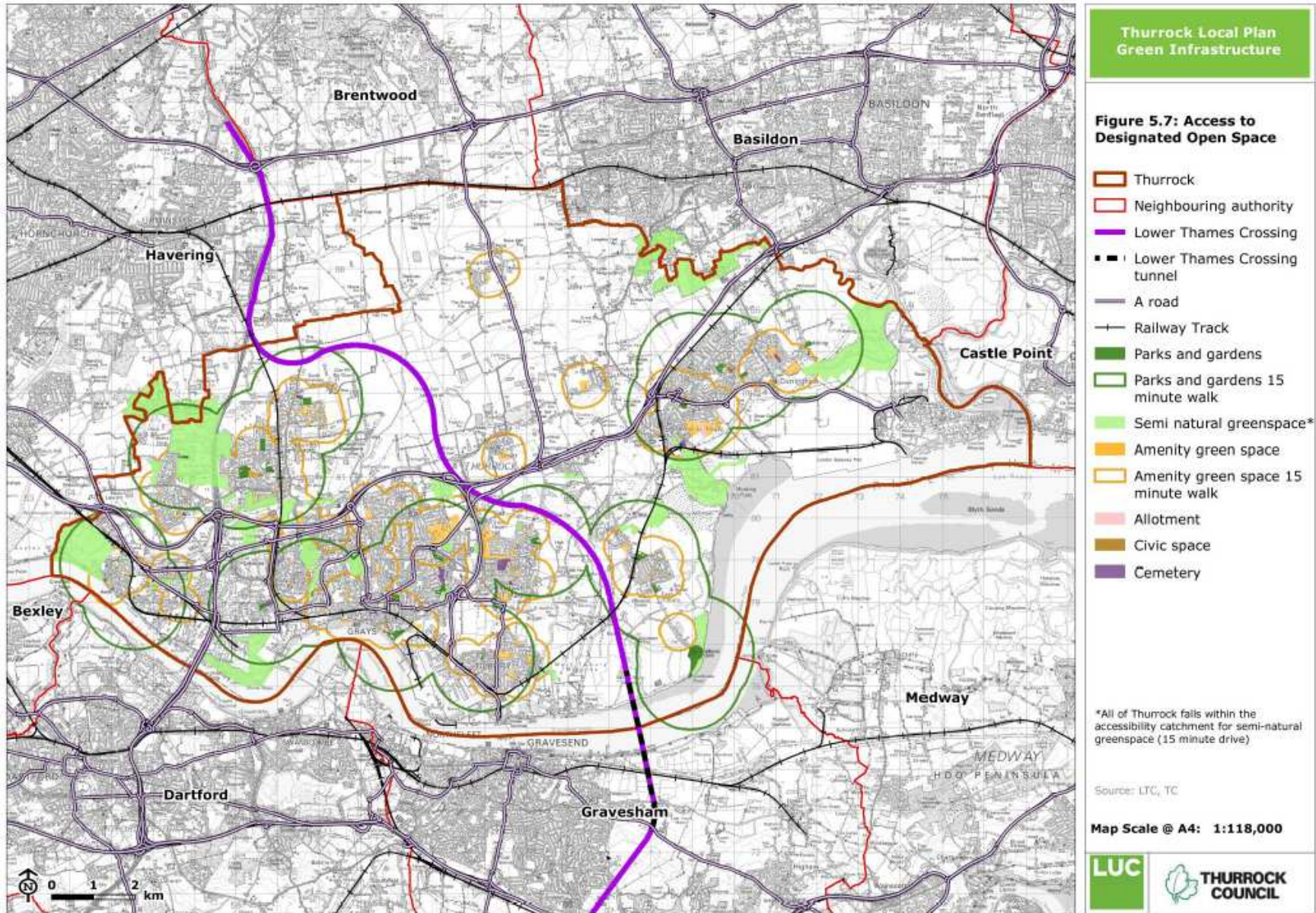
- Coastal and floodplain grazing marsh
- Coastal saltmarsh
- Deciduous woodland
- Good quality semi-improved grassland
- Lowland calcareous grassland
- Lowland dry acid grassland
- Lowland fens
- Lowland heathland
- Lowland meadows
- Mudflats
- Reedbeds
- Saline lagoons
- Traditional orchard
- Area with fragmented priority habitat

Source: LTC, NE

Map Scale @ A4: 1:118,000



Existing assets: access to green space



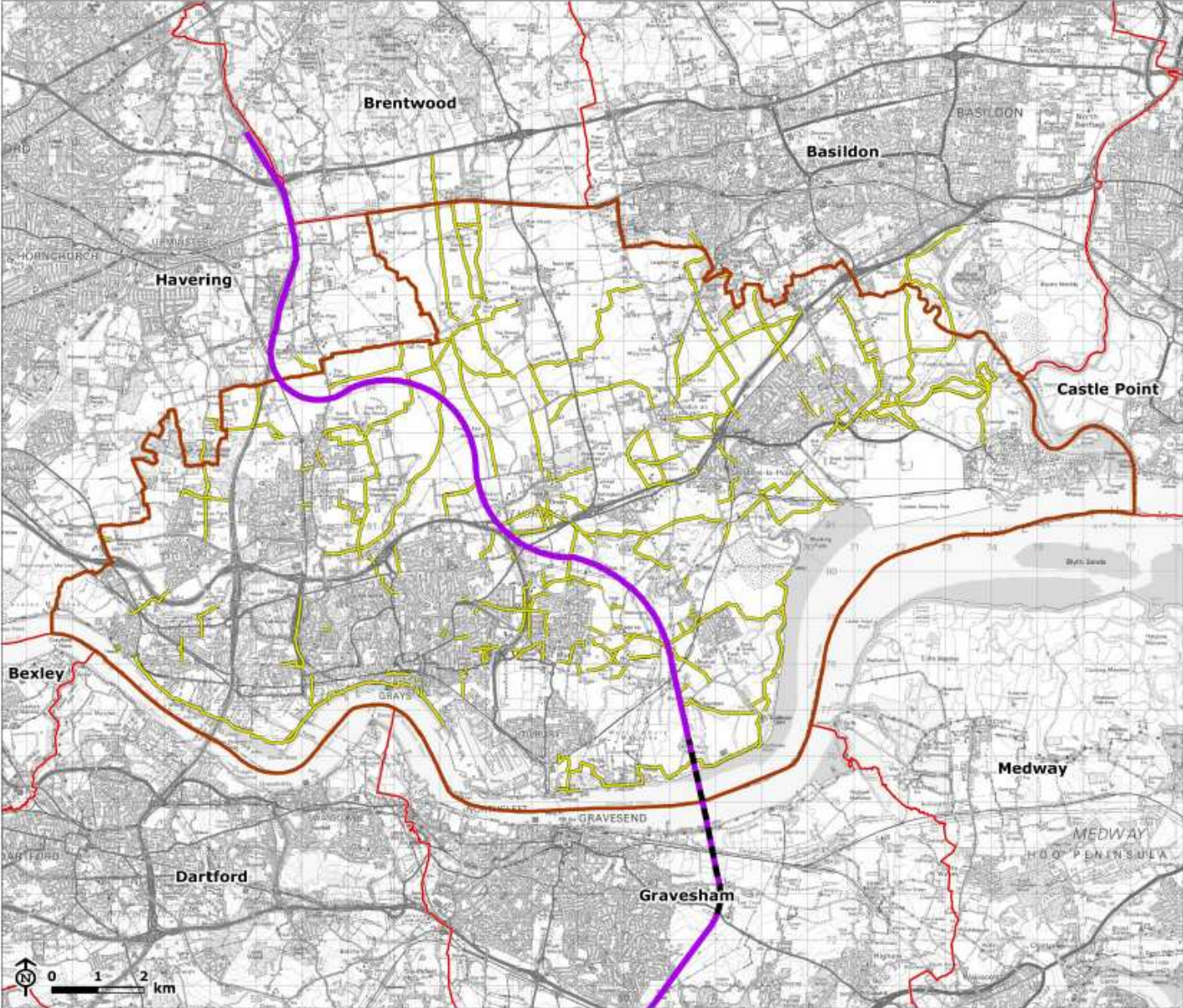
Existing assets: footpaths



Thurrock Local Plan Green Infrastructure

Figure 5.8: Public Rights of Way

-  Thurrock
-  Neighbouring authority
-  Lower Thames Crossing
-  Lower Thames Crossing tunnel
-  Public Rights of Way



Source: LTC, Sostrans, TC

Map Scale @ A4: 1:118,000



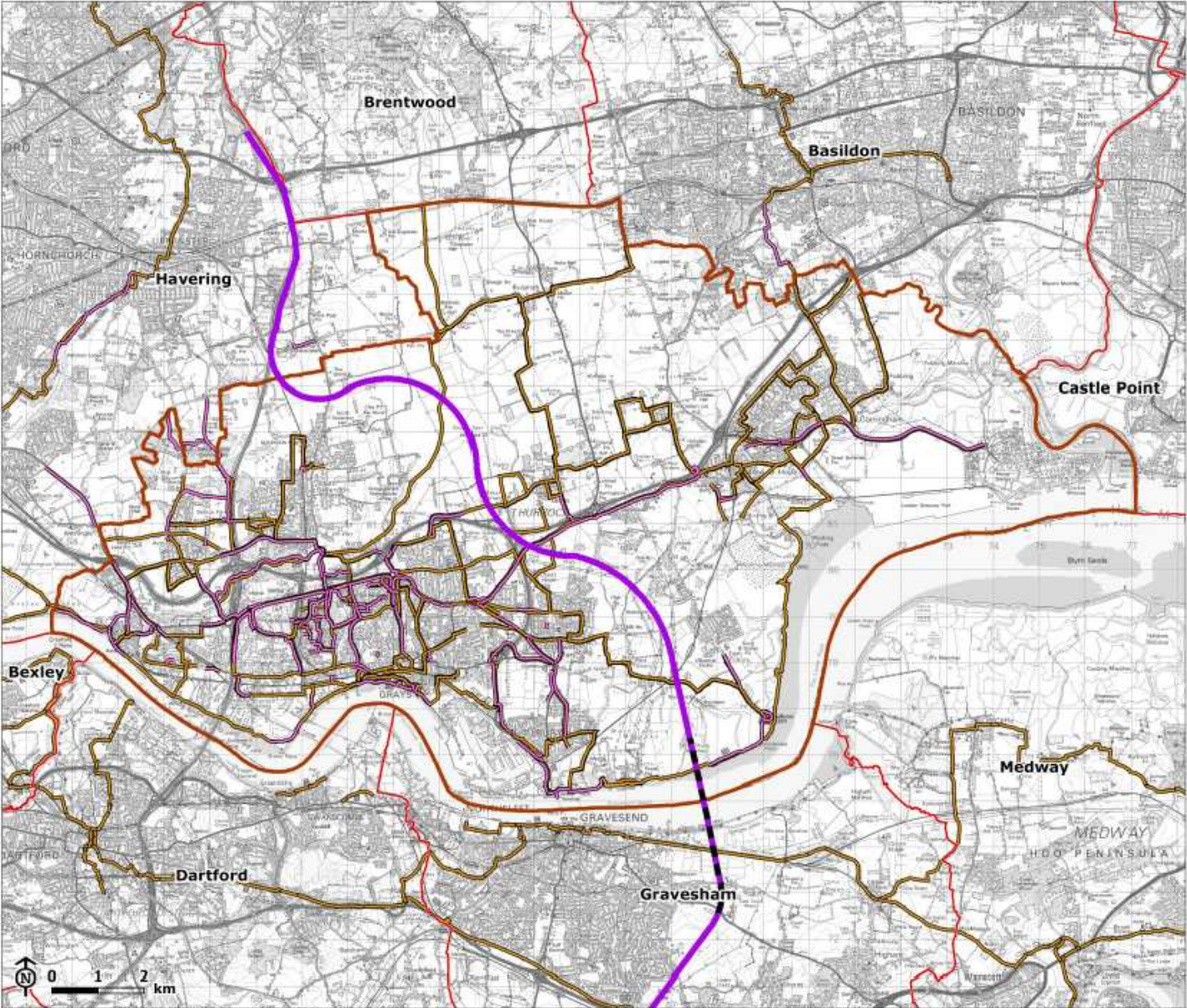
Existing assets: cycle routes



Thurrock Local Plan
Green Infrastructure

Figure 5.9: Cycle Paths

- Thurrock
- Neighbouring authority
- Lower Thames Crossing
- Lower Thames Crossing tunnel
- Traffic free cycle route
- Other cycle route



Source: LTC, Sustrans, TC

Map Scale @ A4: 1:118,000



Existing assets: historic environment



**Thurrock Local Plan
Green Infrastructure**

Figure 5.2: Historic Environment



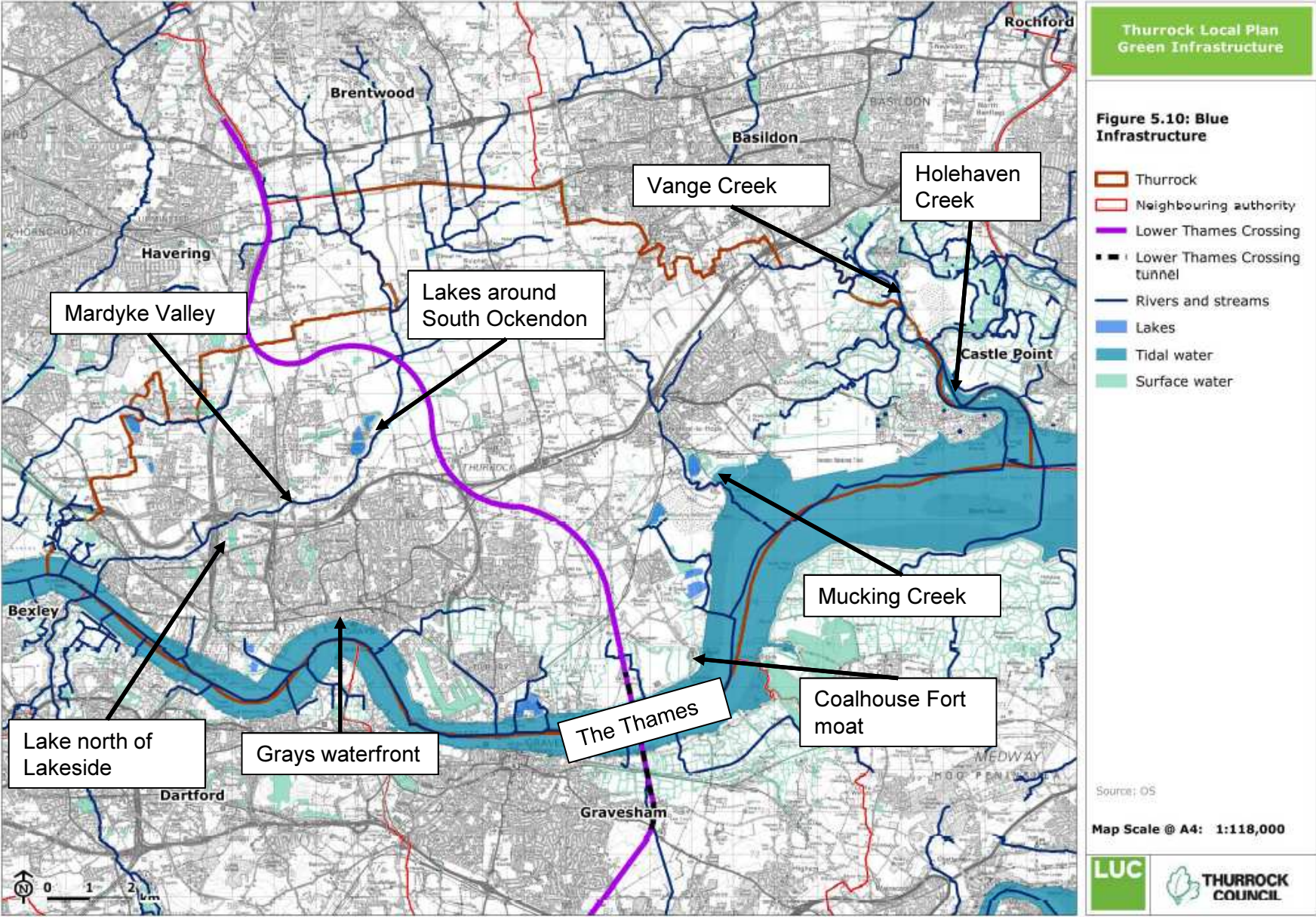
- Thurrock
 - Neighbouring authority
 - Lower Thames Crossing
 - Lower Thames Crossing tunnel
- Listed building**
- Grade I
 - Grade II*
 - Grade II
- Conservation areas
- Scheduled Monument
- Heritage at Risk

Source: HE, LTC

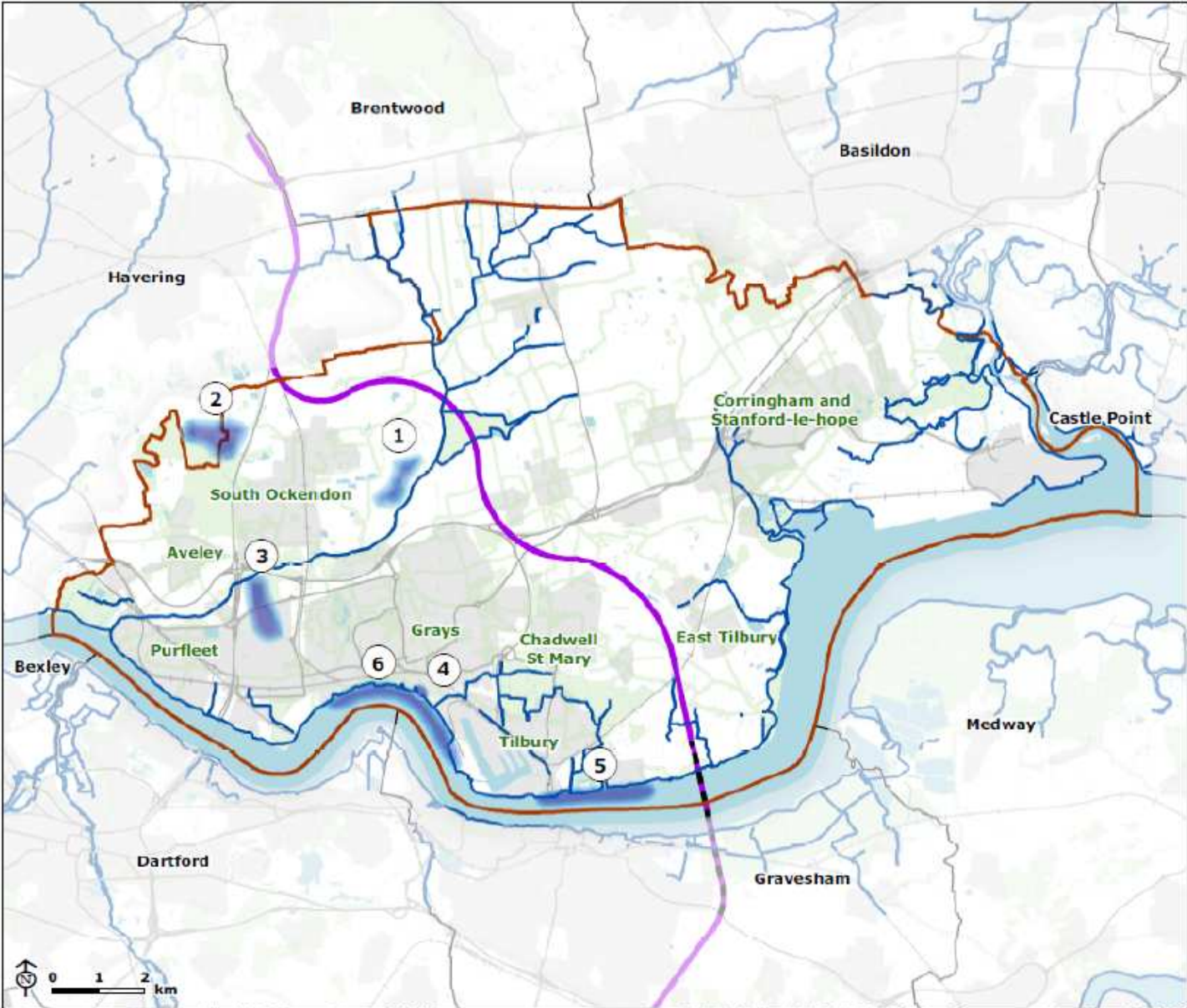
Map Scale @ A4: 1:118,000



Existing assets: blue infrastructure



Proposals: blue infrastructure



**Thurrock Local Plan
Green Infrastructure**

Figure 7.2: Strategic Blue Infrastructure Projects

- Thurrock
- Neighbouring authority
- Lower Thames Crossing
- Lower Thames Crossing tunnel
- Blue Infrastructure Opportunities**
 1. Grangewaters
 2. Lakes at Belhus Country Park
 3. Lakeside
 4. Thurrock Yacht Club
 5. Enhanced access for river transportation
 6. Additional Leisure Moorings
 7. EA Flood Defence Infrastructure

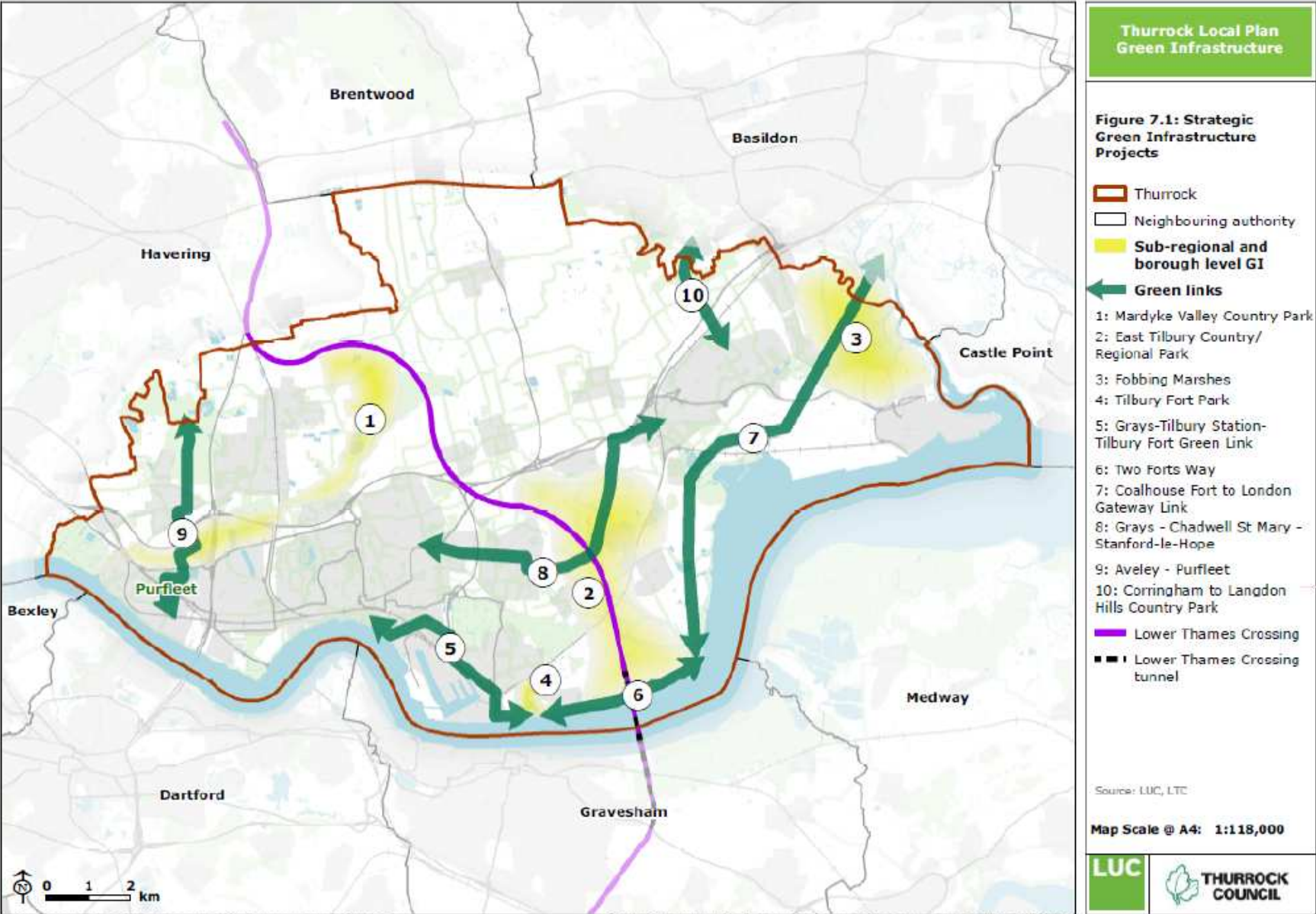
Source: LUC, LTC

Map Scale @ A4: 1:118,000

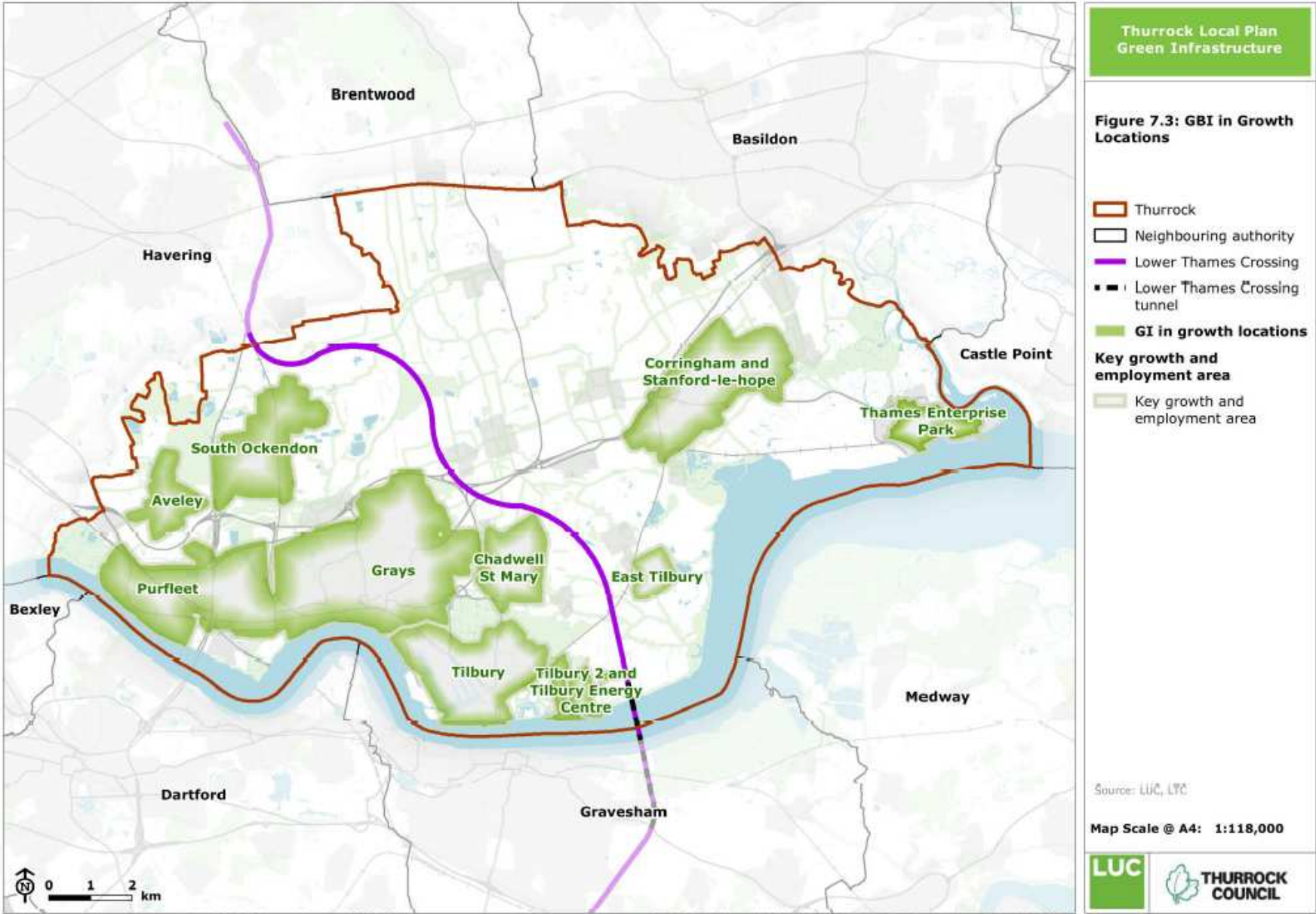


Proposals: green infrastructure

Sub-regional and borough level GI & green links



Proposals: GBI in growth locations



Delivery mechanisms



- Embed the proposals in the Local Plan
- Mitigation for NSIPs (LTC and Tilbury Energy Centre)
- Establishing partnerships and dedicated delivery bodies
- Biodiversity net gain / offsetting / SANGs

Funding



- Funding through CIL / s106
- Landfill Communities Fund
- Countryside Stewardship
- Carbon offsetting
- Capital Programmes
- The National Lottery
- Environment Agency funding
- Charitable trusts
- Endowments
- Local business sponsorship

Next Steps



Finalise GBI Strategy

- Ensure baseline information is up to date.
- Co-ordinate with mitigation proposals for Lower Thames Crossing, once more details are known.
- Give greater consideration to how proposals can help address the climate crisis.

Take forward GBI Strategy

- Identify the best means of delivery
- Work with stakeholders to develop GBI projects
- Engage with NSIP consultation process
- Feasibility studies
- Training on GBI for members and officers
- Workshop to consider how the GBI strategy relates to other strategies
- Monitoring